

Canola in Ontario: Update on Production, Pests and Priorities



Meghan Moran

Canola & Edible Bean Specialist, Ministry of Agriculture

meghan.moran@ontario.ca

519-546-1725

Field Crops in Ontario

2017 (ac)

2012 (ac)

Soybean	3.08 M	2.59 M
Corn	2.12 M	2.21 M
Winter Wheat	920,000	820,000
Spring Wheat	90,000	89,000
Dry Edible Beans	135,000	125,000
Canola	45,000	74,000

(Estimated acreages)



Spring Canola in Ontario

Rotations

- Canola – winter wheat – soy – corn
- Cooler regions: forage – canola – spring cereal

85-90% Liberty Link

Harvest

- Desiccate only if needed
- Majority straight cut
- Some swath or straight cut depending on conditions
- Northern regions swath

Tillage

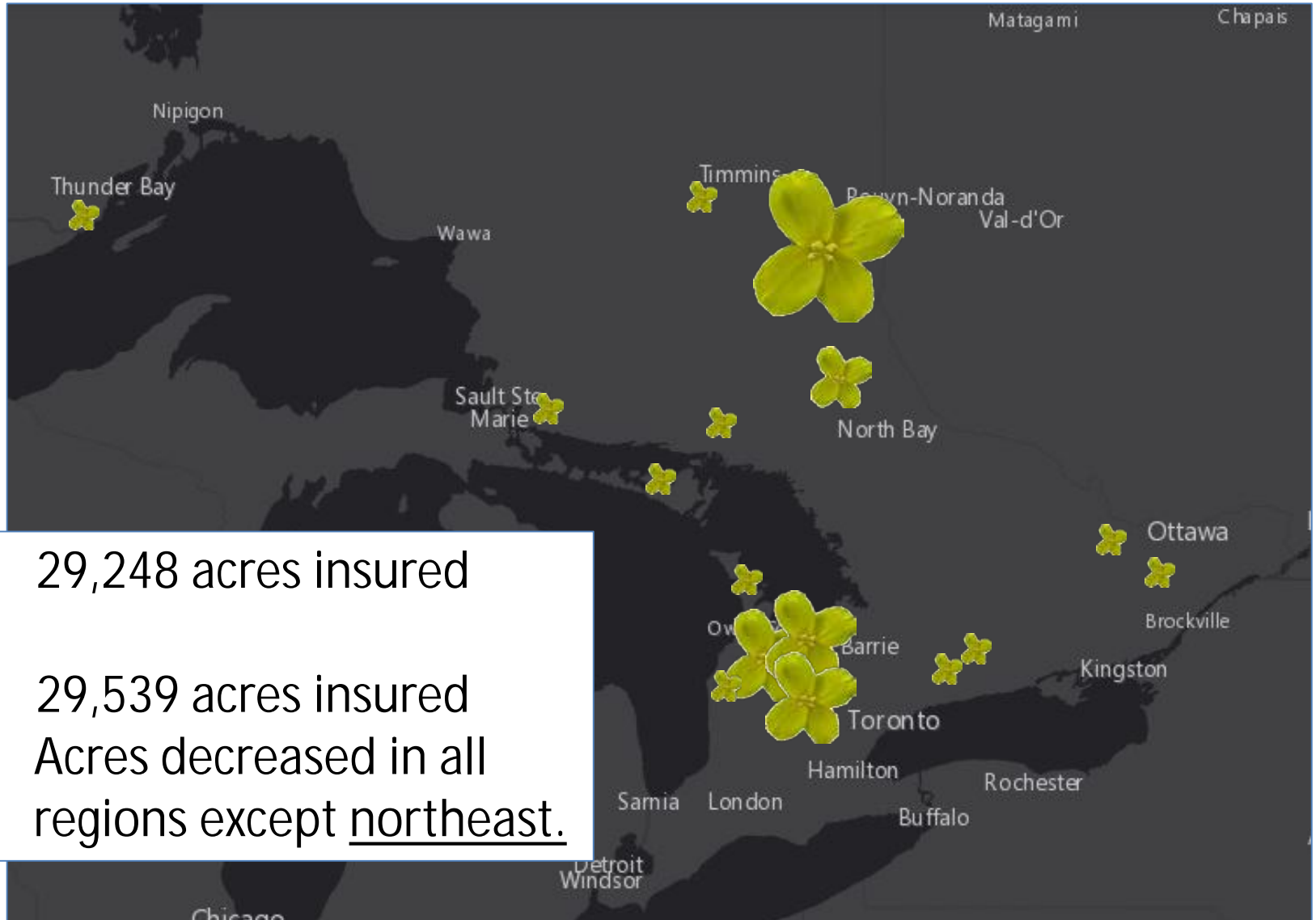
- Very few no-till acres of canola

Winter Canola

- Southern Ontario, 10 producers with crop insurance
- After winter wheat, and opportunity to double crop soybeans
- Increasing interest as we encourage growth of cover crops
- Needs: New genetics, improved overwintering
 Seed availability
 Improved recommendations; planting date



Spring Canola Acres



2016 : 29,248 acres insured

2017: 29,539 acres insured

Acres decreased in all regions except northeast.

Seeding

- Rain through April and May
 - Eastern ON rain 200% of normal in May
 - Northeastern ON snow, below 0° C on May24
- May 30th – 80% of intended canola acres planted
 - ~100% emergence! Slugs. Mould. Lodging.



Swede Midge

- Adults emerge end of May/first of June
- Lay eggs on actively growing tissue (meristems)
- Larvae feed on tissue, salivary enzymes=distortion



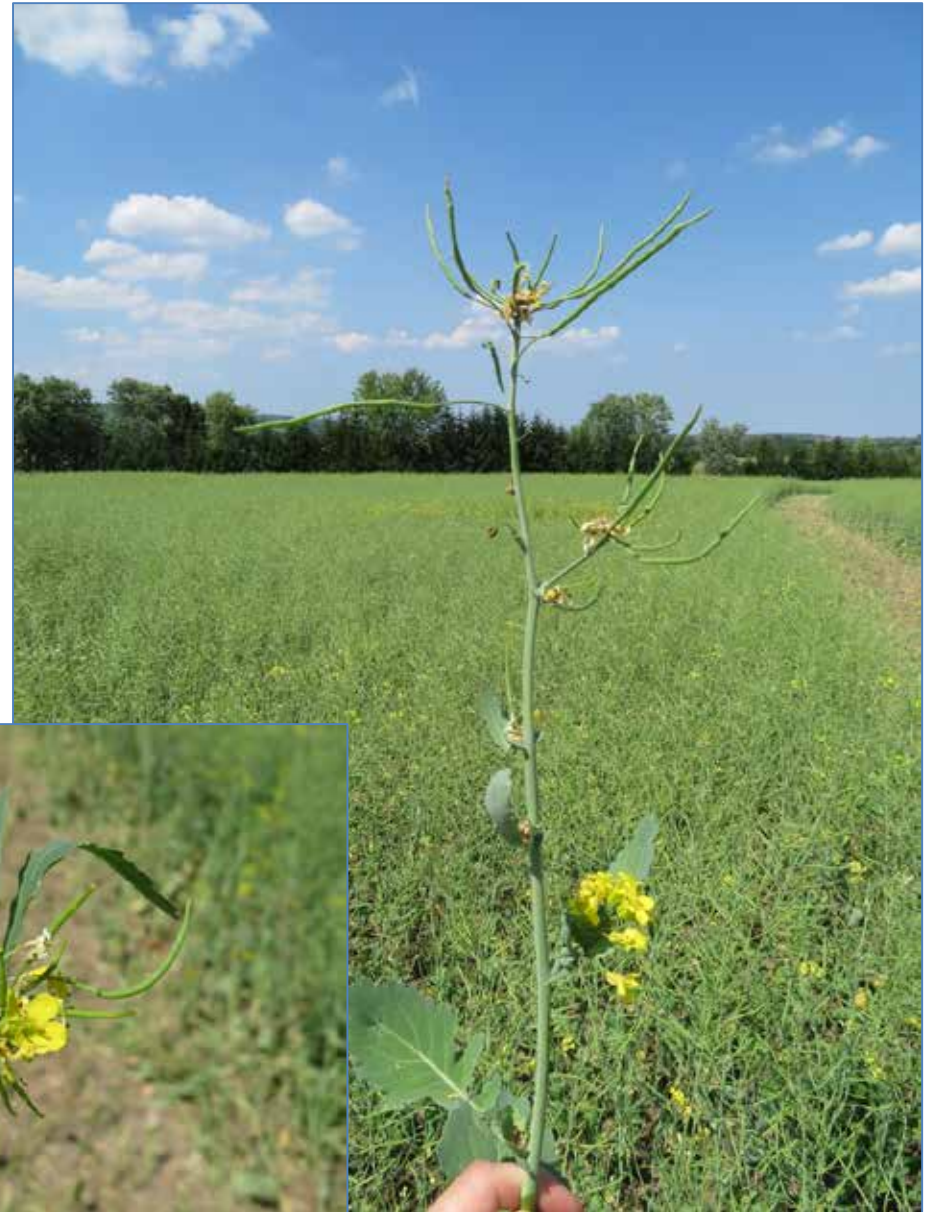
Swede Midge

- Damage around green bud stage can prevent bolting



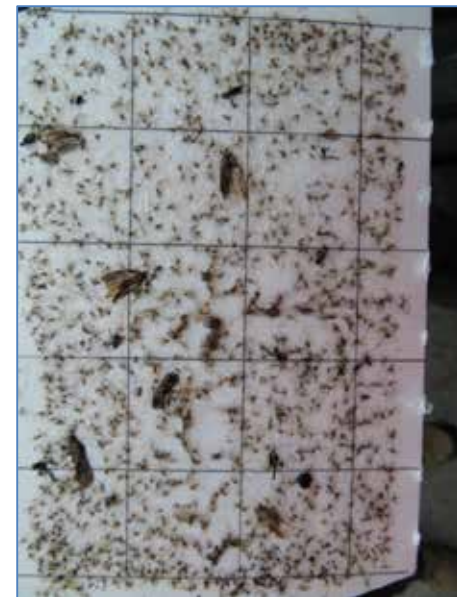
Swede Midge

- Later damage can prevent branching



Swede Midge

- Set 4 traps at 1-leaf stage; \$175/field
- “Threshold” = total of 20 adults midges trapped
- 2017- At threshold during early growth stages (June 1)
- How many insecticide applications can you pencil out?
- **Most important stage to protect is green bud**

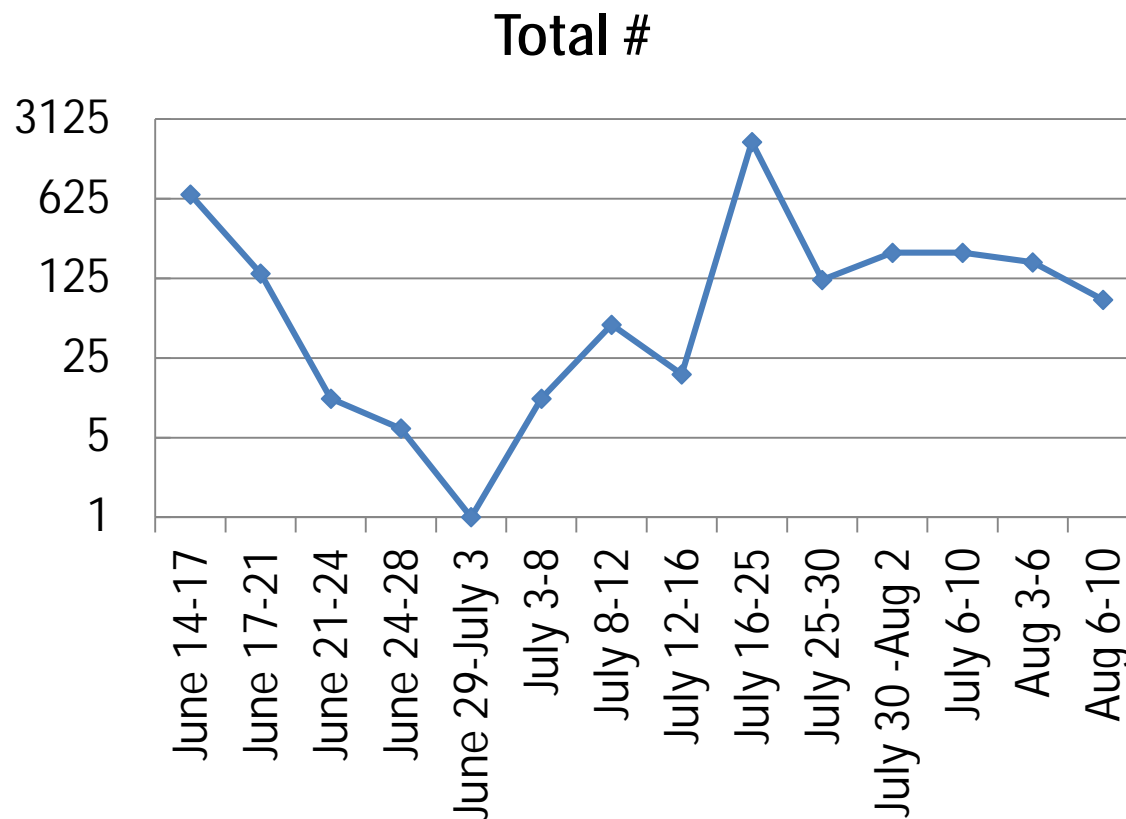




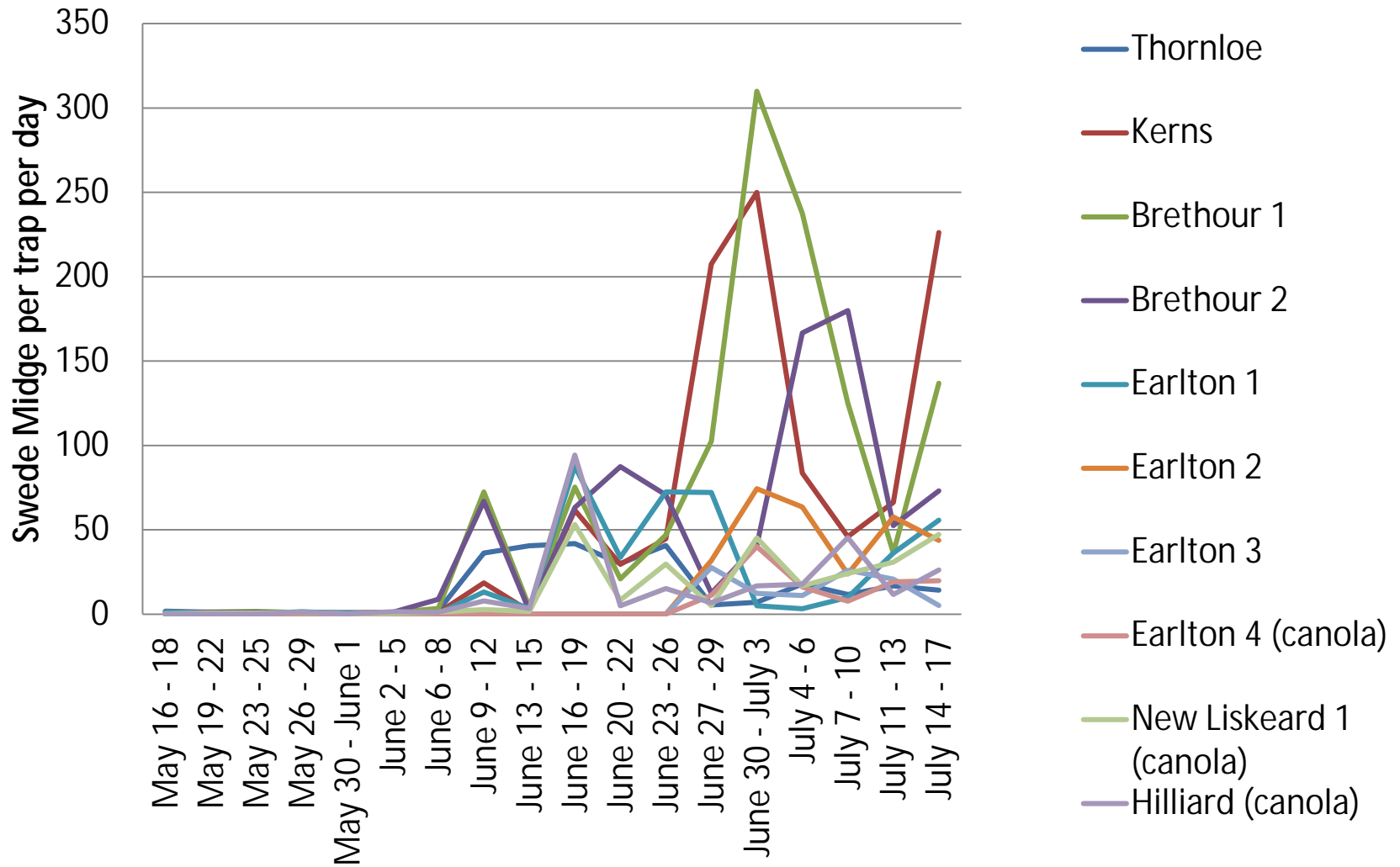
2016 Northeastern Swede Midge Monitoring

Installed :
June 14th 2016

Previous crops:
oats 2016
wheat
soybeans
barley
canola 2011



2017 Northeastern Swede Midge Monitoring



Swede Midge

- 4 generations per season



Natural Enemy of Swede Midge

Synopeas myles

- Generalist, and not native to Canada
- lays eggs inside swede midge larvae

Weekly sampling at 4 central ON sites

- Appears 1 or 2 wks after swede midge
- 2016 – present for 6 wks, up to 29% parasitism
- 2017 – lower abundance, up to 6% parasitism

“Snapshot” Sampling across province

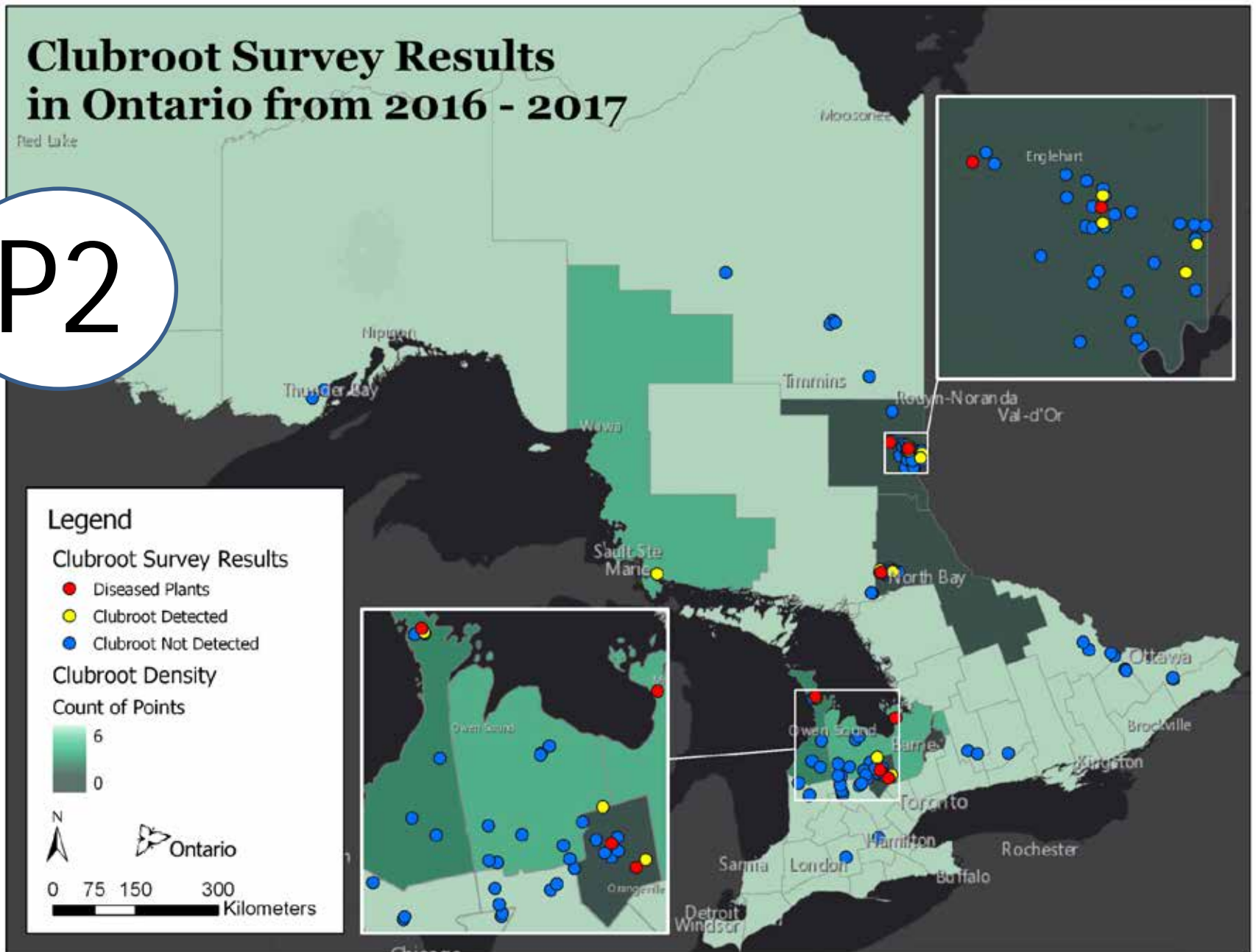
- 24 sites sampled once
- Present in northeast and central regions

Rebecca Hallett, University of Guelph

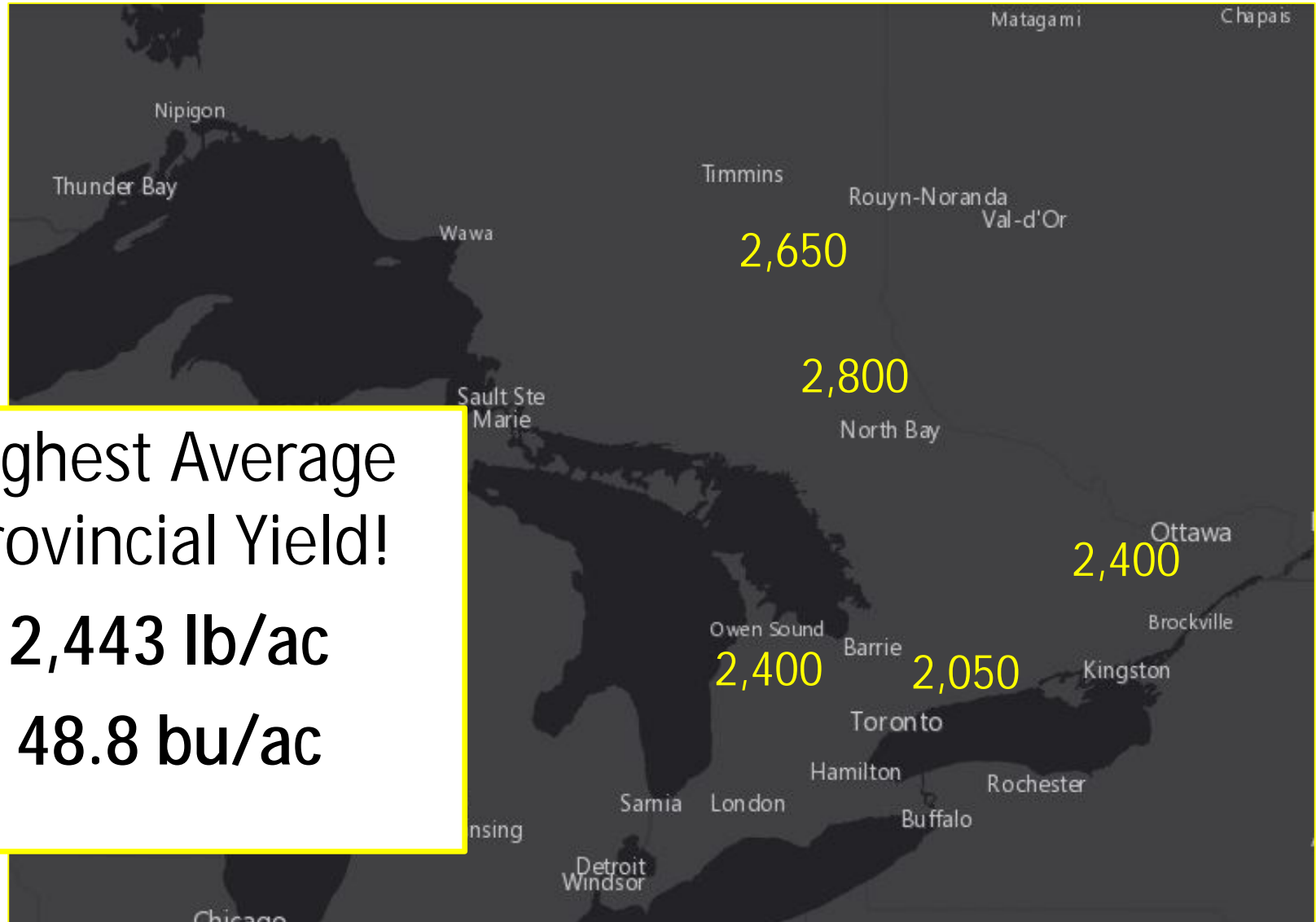


Clubroot Survey Results in Ontario from 2016 - 2017

P2



Spring Canola Yield



Highest Average
Provincial Yield!

2,443 lb/ac

48.8 bu/ac

Spring Canola Yield Challenge

Winners

1 st	Jon and Brian Wiley	3805 lbs/ac	Meaford
2 nd	Don and Jeff Curry	3645 lbs/ac	Lions's Head
3 rd	Earl and Anne Schneider	3593 lbs/ac	Ayton
4 th	Leo and Jon Blydorp	3589 lbs/ac	Amaranth
5 th	Bob Miller	3436 lbs/ac	Thornloe
6 th	Darcy Martin	3405 lbs/ac	Kenilworth



Priorities:

Research, Agronomy, Communication

1. **SWEDE MIDGE**
2. Winter canola
3. Local agronomic research in spring canola
4. Clubroot





Meghan Moran

Canola & Edible Bean Specialist, OMAFRA

meghan.moran@ontario.ca

519-546-1725