

Manitoba Canola Outlook



Dane Froese

Industry Development Specialist - Oilseeds

CanolaWeek Conference
December 5, 2017

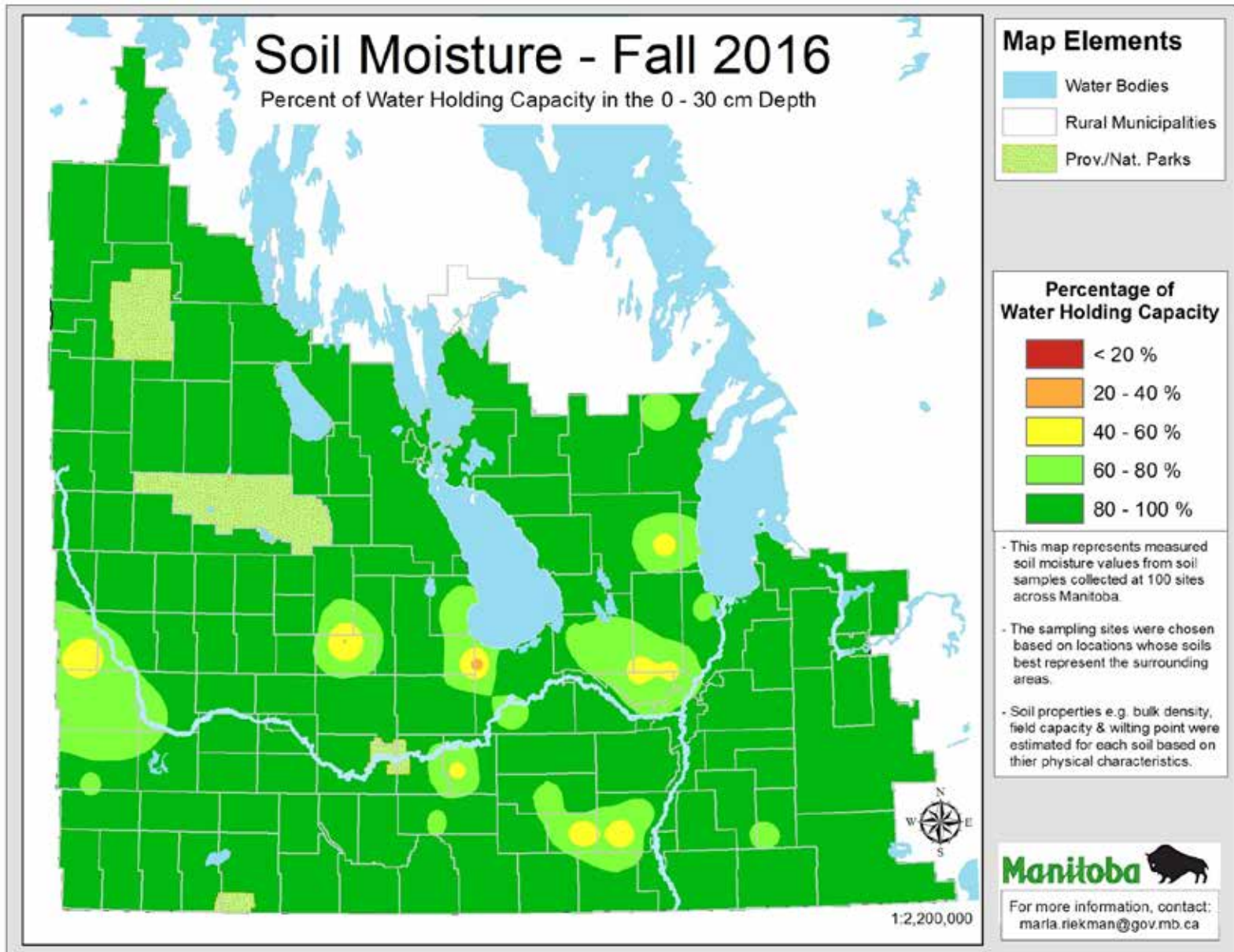
Manitoba



2017 Manitoba Canola Snapshot

- Cool, dry start, infrequent/late rains
- Yields were above average
- Canola quality good
- Main disease was sclerotinia
 - Followed closely by blackleg
- Widespread adoption of straight cutting
- Some storage issues

Fall 2016 - % WHC (0-30cm)



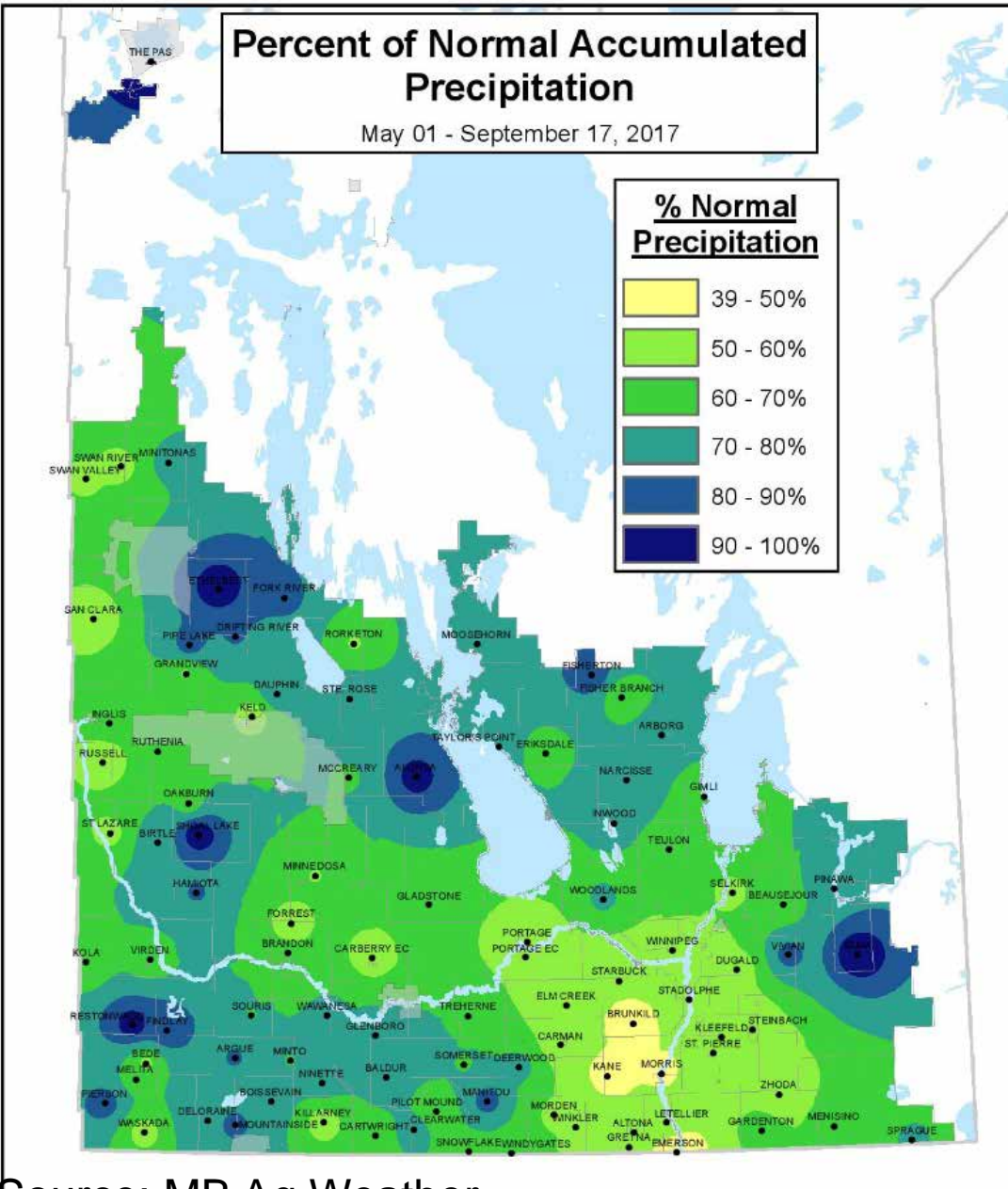
Total Accumulation of Precipitation

May 01 - October 29, 2017

Source: MB Ag Weather



- Growing season view doesn't tell whole story
- Very dry until 3rd week May
- Late May to November - frequent rains and high humidity throughout rest of season
- Also a number of tornados and high wind events cause damage



Growing Season

- Wet fields in spring
 - Spring tillage to dry out, poor seedbed in places
 - Cool conditions contributed to early season stresses
- Not enough/irregularly distributed rainfall
 - Contributed to strong root development
- Regional insect pressures
 - Bertha armyworm
 - diamondback moth larvae
 - cutworm
- Relatively smooth harvest
- Good yields



2017 Canola Performance

- Canola average to above average yields – MB Average expected at 42.1 bu/acre¹
 - Disease pressure was overall lower than 2016, most notably for Blackleg²
 - Canola quality good – low green and dockage, fewer heating issues than last year
 - Overall oil content in seed from MB is higher than average
 - Straight cut varieties have rising demand – expecting top two canola hybrids to have the same percentage share of market in 2018, one normal swath, one a straight cut variety
 - Markets are performing well, stable prices and good returns
1. Statistics Canada “Estimated areas, yield, production [...] of principle field crops. CANSIM Table 001-0017
 2. Canadian Phytopathological Society, *2017 Canadian Plant Disease Survey*. (Abbotsford, 2017), 183.



Canola Acres & Yields (2012-2017)



5 year Avg. ACRES = 3.15 million, YIELDS = 39.8 bu/ac

Source: Statistics Canada "Estimated areas, yield, production [...] of principle field crops. CANSIM Table 001-0017

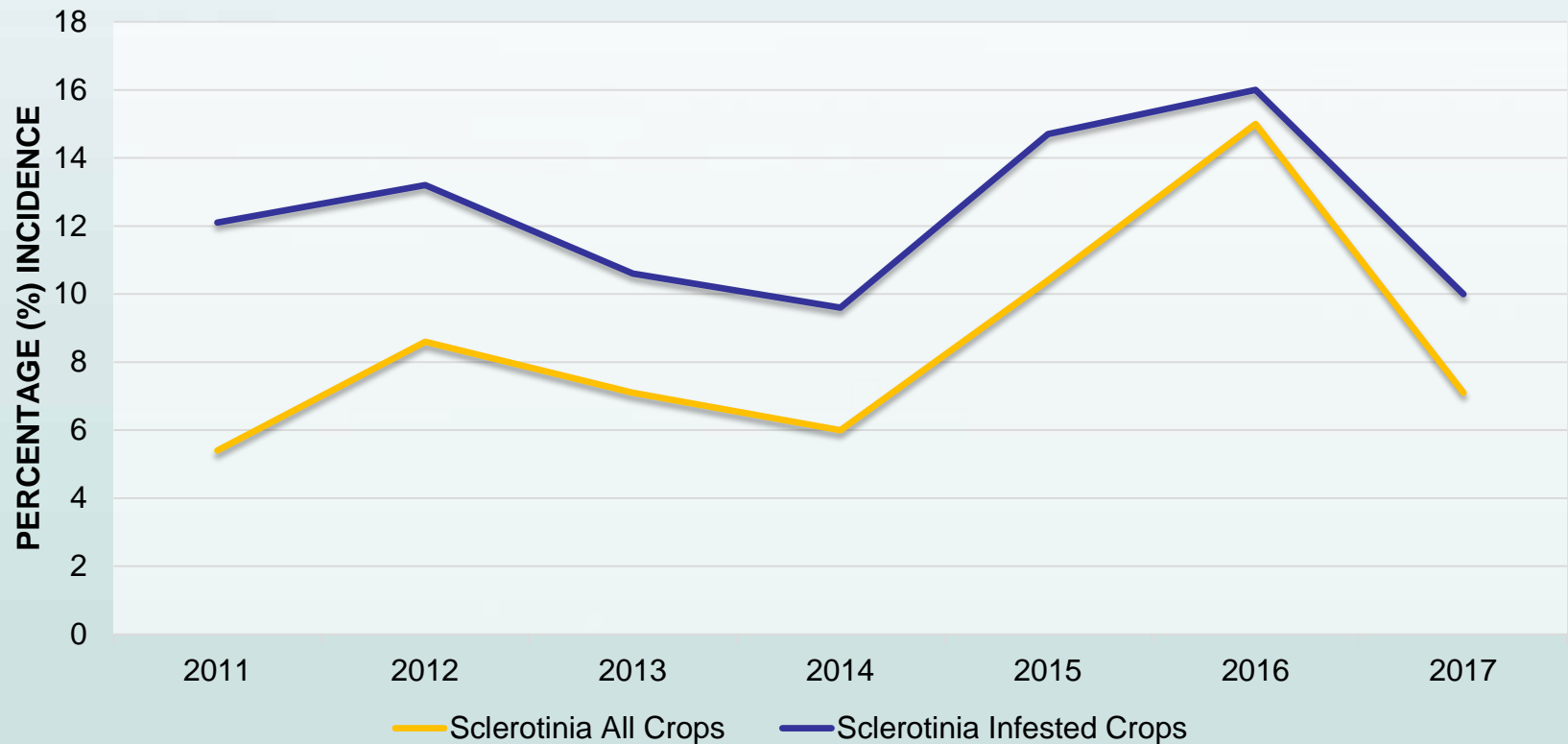
Source: MASC Seeded Acreage Report

Variety Comparison

2016		Based on 3,173,535 Acres Reported	2017		Based on 3,108,464 Acres Reported
Variety	Area Share		Variety	Area Share	
L252	31.1%		L252	25.1%	} 1.9 M
L140P	16.4%		L140P	17.5%	
5440	6.2%		L233P	10.0%	
L130	5.2%		L230	4.9%	
1012 RR	3.7%		5440	3.7%	
74-44 BL	3.2%		74-44 BL	3.2%	
46H75	2.5%		1022 RR	3.1%	
45H33	2.4%		75-65 RR	2.7%	
2020 CL	2.3%		46H75	2.3%	
L156H	2.3%		1012 RR	2.2%	

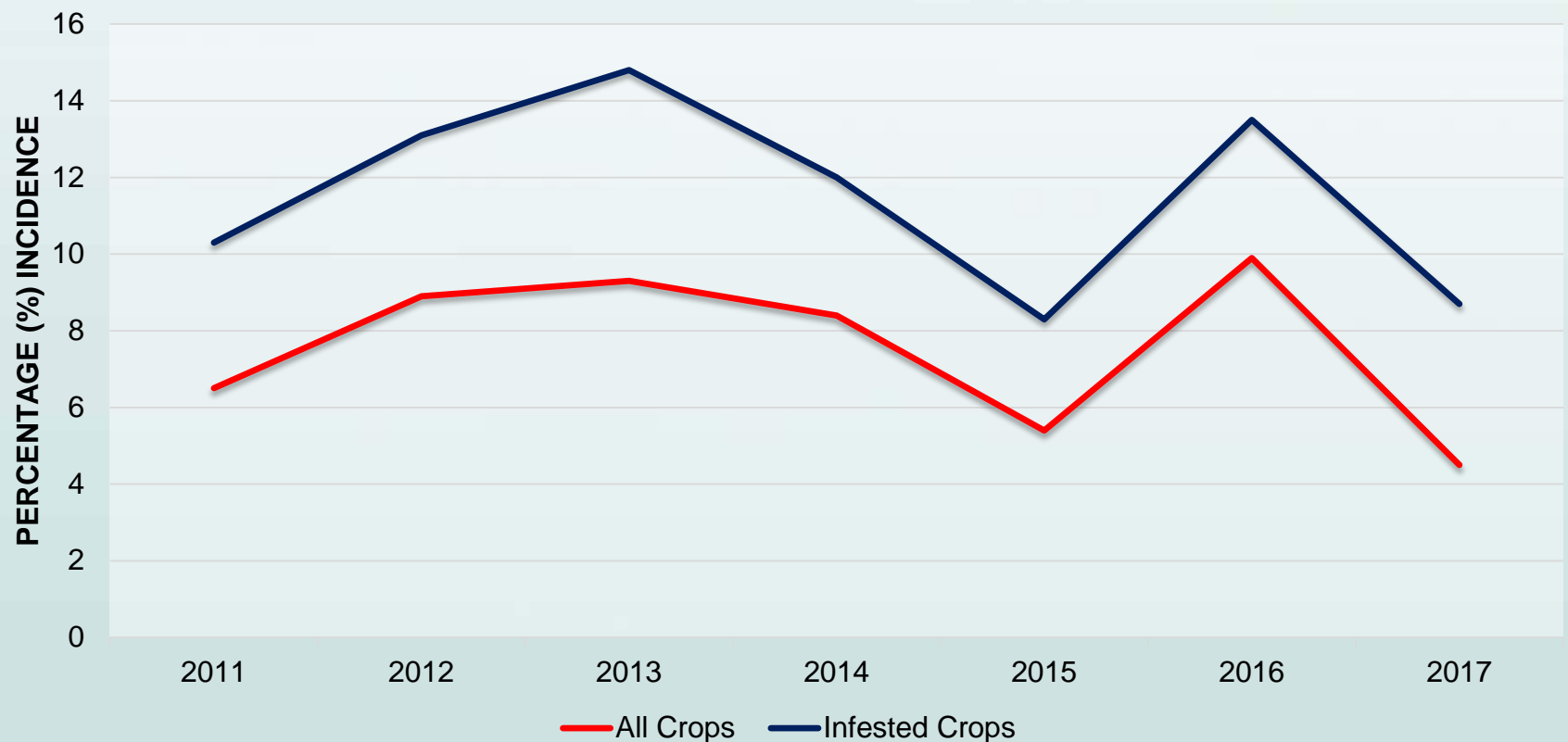
Disease Survey Results - Sclerotinia

Manitoba % Sclerotinia Incidence (2011-2017)



Disease Survey Results - Blackleg

Manitoba % Blackleg Incidence (2011-2017)



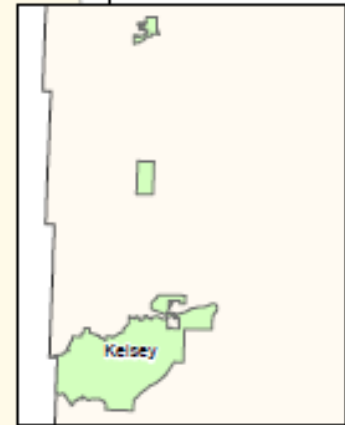
Manitoba Clubroot Distribution

Cumulative Testing (2009-2015)

Map created on May 13, 2016



- 10 fields with symptoms
- 6 fields with spore concentration >10,000
- Median spore concentration = 2,140/gram soil
- Early Detection, Rapid Response
- Farmers and agronomists now pulling plants and self-submitting soil samples for testing to make future management decisions

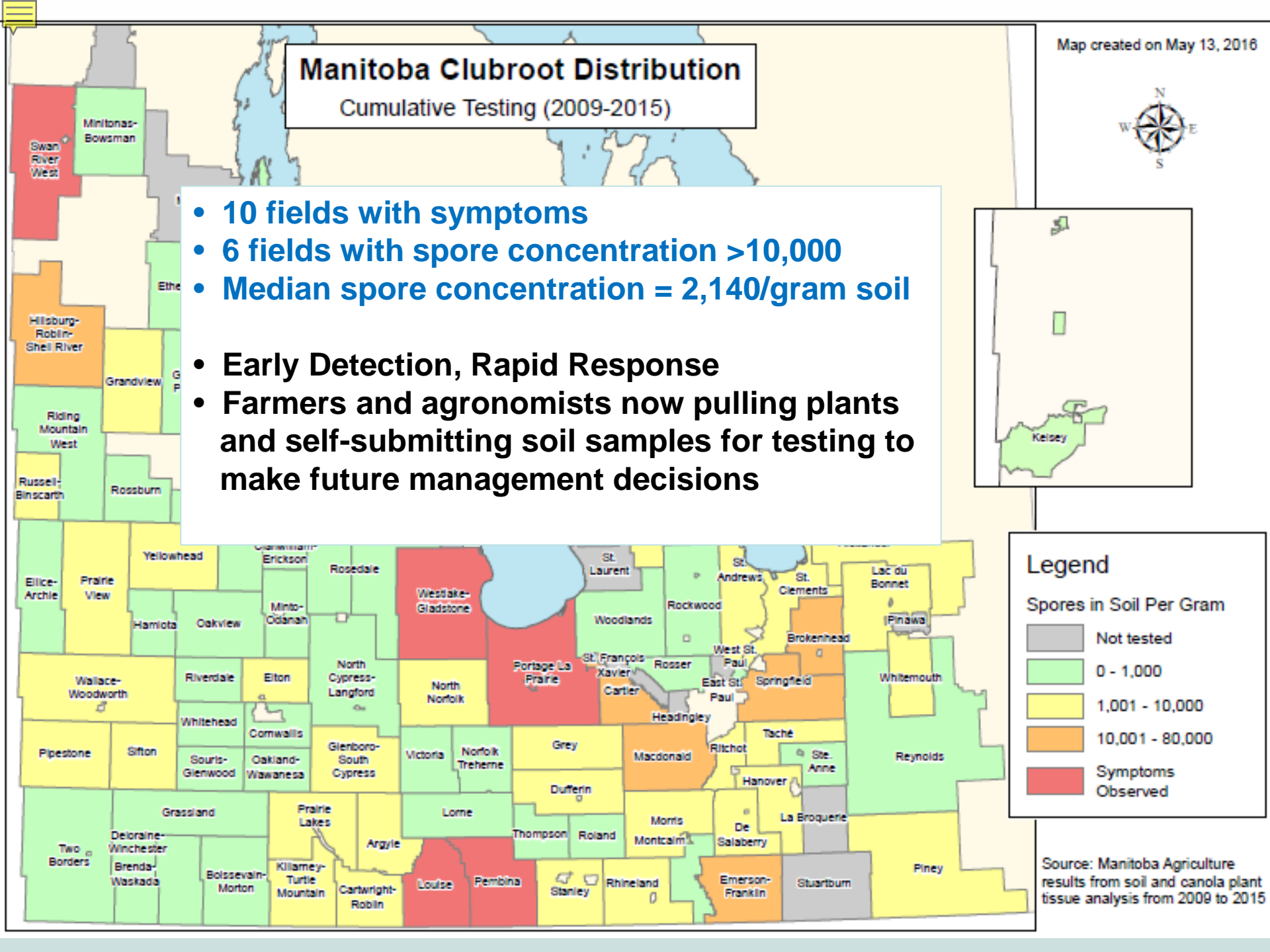


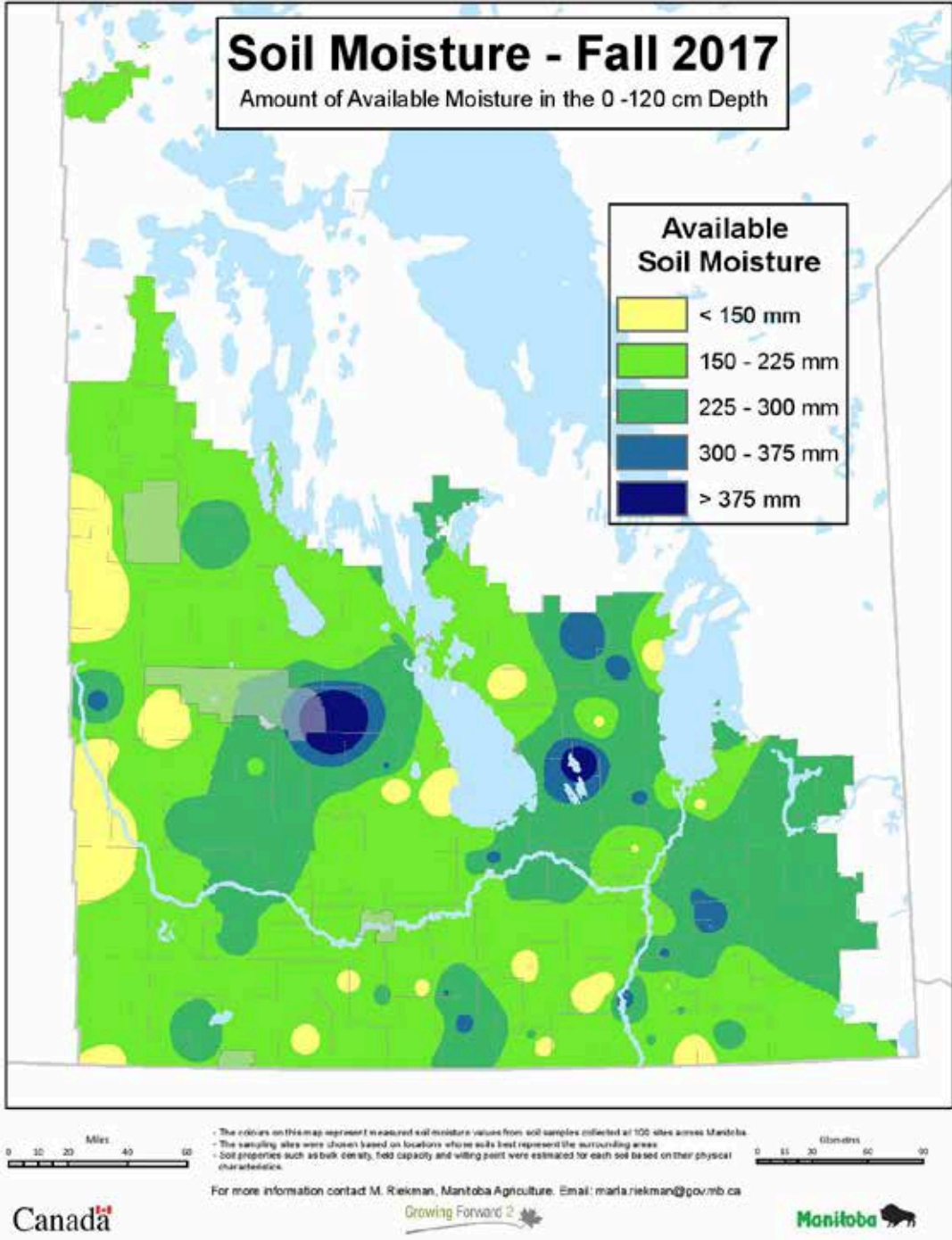
Legend

Spores in Soil Per Gram

Grey	Not tested
Light Green	0 - 1,000
Yellow	1,001 - 10,000
Orange	10,001 - 80,000
Red	Symptoms Observed

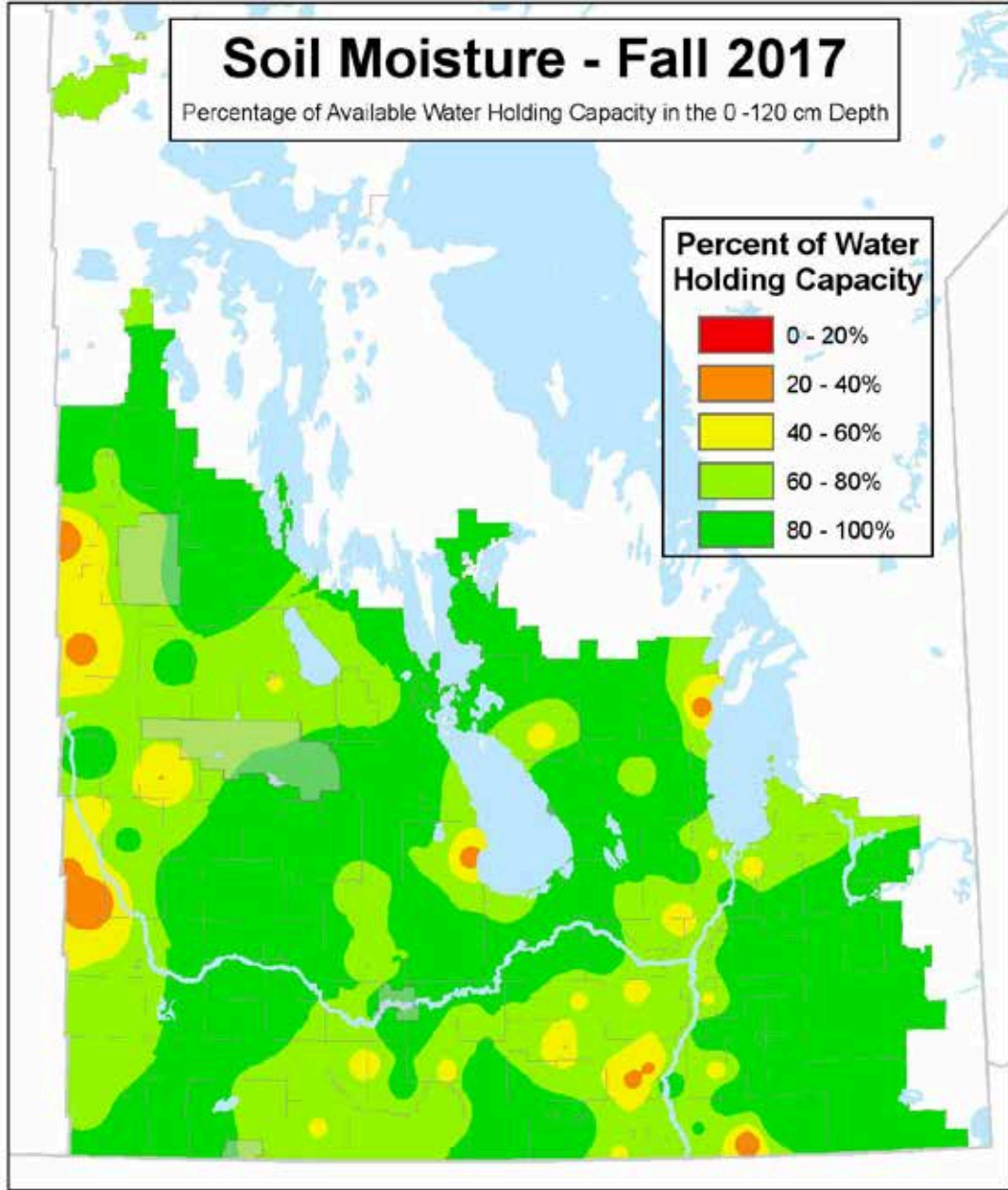
Source: Manitoba Agriculture results from soil and canola plant tissue analysis from 2009 to 2015





2017 Fall Soil Moisture

Courtesy of Marla Riekman – Manitoba Agriculture



2017 Fall % WHC

Courtesy of Marla Riekman – Manitoba Agriculture

All the Best in 2017!

Dane Froese

Industry Development Specialist - Oilseeds

Manitoba Agriculture

204-750-2840

Dane.Froese@gov.mb.ca



[@dane_froese](https://twitter.com/dane_froese)